

# UMAX AstraCam

## OWNER'S GUIDE

## TRADEMARKS

UMAX is a registered trademark of UMAX Technologies, Inc. AstraCam is a trademark of UMAX Data Systems. PhotoDeluxe is a trademark of Adobe Systems, Inc. Windows is a registered trademark of Microsoft Corporation. PhotoCabinet is a trademark of NewSoft Technology Corporation. Other names and trademarks appearing herein are trademarks of their respective holders.

## COPYRIGHT

©1999 UMAX Technologies, Inc. All rights reserved. No part of this publication may be reproduced, transmitted, transcribed, stored in a retrieval system, or translated into any language or computer language, in any form or by any means, electronic, mechanical, magnetic, optical, chemical, manual, or otherwise, without the prior written permission of UMAX Technologies, Inc.

## IMPORTANT SAFEGUARDS

Read all of the instructions:

- Save these instructions for later use.
- Follow all warnings and instructions marked on the product.
- When replacement parts are required, be sure that service technicians have used replacement parts that conform to at least the same safety standards with regard to fire, electric shock, or other hazards.
- Do not use this product near water or in rainy/moist environment.
- The product should be operated using only the type of power source indicated on the product label.
- Do not attempt to service this product yourself as opening or removing the enclosure may expose you to dangerous voltage or other hazards.
- This unit has input circuitry suitable for a 5V DC supply.
- The sound pressure level at the operators position according to IEC 7041:1982 should be less than or equal to 70dB(A).

## CAUTION

Improperly inserting the rechargeable batteries (wrong polarity) may cause damage to your camera and will void the warranty. See the guide symbols inside the battery case for proper installation of the batteries and read the section titled, Preparing the AstraCam for Use.

Use only the AC adapter that came with your AstraCam system to power the cradle.

**Danger of Explosion** - Non-rechargeable AAA Batteries can be used temporarily to take photos, however, the batteries must be removed prior to putting the camera on the cradle. Failure to remove all of the non-rechargeable batteries before placing the camera in the cradle may cause damage to the camera voiding the warranty and/or batteries to discharge or explode which may cause bodily injury.

Replace only with the AAA size, 1.2V, nickel metal hydride rechargeable batteries. Check with



**A.C.N. 009 383 279**

local codes for possible special disposal instructions.

# CONTENTS

Getting Started .....	2
Introduction .....	2
UMAX AstraCam Package Contents .....	2
Setting Up Your New Digital Camera System .....	3
Installing the Batteries .....	3
Replacing Worn-Out Batteries .....	3
PC System Requirements .....	4
Installing the Software .....	4
Installing Adobe PhotoDeluxe .....	4
Installing the AstraCam Software .....	4
Connecting the AstraCam Cradle .....	5
Powering Up the Cradle .....	5
Connecting the Cradle to Your Computer .....	5
The AstraCam Digital Camera .....	6
Taking Your First Photo .....	7
Recording a Message for Your Photo .....	8
Erasing Photos .....	8
Camera Memory Full .....	9
Recharging the AstraCam Batteries .....	9
Using the AstraCam Program .....	10
Downloading Photos .....	11
The AstraCam Software .....	12
Viewing Your Photos .....	13
Transferring the Photos .....	14
Saving a Photo a File .....	14
Megapixel .....	15
Deleting Photos .....	15
Operating the AstraCam from the Program .....	16
Taking a Photo .....	16
Making a Recording .....	16
Adjusting AstraCam Settings .....	16
Checking the USB Port .....	17
Quitting the AstraCam Program .....	17
Organizing Your Photo Data with PhotoCabinet .....	17
Retrieving Your Photos .....	18
Creating a Calendar with PhotoDeluxe .....	19
Creating a Photo & Sound E-Mail .....	20
Preparing a Photo & Sound E-Mail Greeting .....	20
Sending Your Photo & Sound E-Mail Greeting .....	21
Sending a Photo & Sound File as an Attachment .....	21
Caring for Your AstraCam .....	22
AstraCam Specifications .....	23
Contacting Technical Support .....	24
Product Registration .....	24
FCC Declaration of Conformity .....	25
Warranty .....	26

# GETTING STARTED

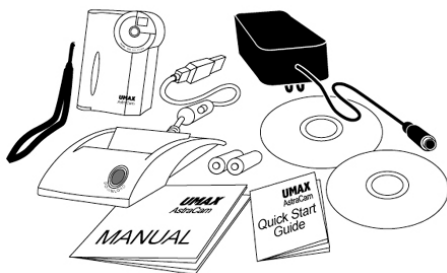
## Introduction

Thank you for purchasing the UMAX AstraCam digital camera system. Now you can take great digital photos, and capture up to 20 seconds of sound with each shot. Easily transfer your new photos to a computer and be enjoying them in just moments.

Your AstraCam comes with software to make your photo taking experience really creative. Use Adobe PhotoDeluxe® for artistic manipulation of your photos or to just make them better. Organize your photos with PhotoCabinet and make Internet photo greeting cards with VistaShuttle. AstraCam with its lightweight point and shoot simplicity, and fast photo downloading is a great way to welcome you to the world of digital photography.

## UMAX AstraCam Package Contents

Your AstraCam package contains everything you need to take digital photos, download them to your computer and make use of your photos. When unpacking your AstraCam, make sure you've received all the components:



- AstraCam Digital Camera
- Cradle with built in battery charger
- 2 AAA Nickel Metal Hydride rechargeable batteries
- Power adapter & power cable
- Camera Strap
- Quick Start Guide
- AstraCam software CD including:
  - AstraCam Software (TWAIN Driver)
  - PhotoCabinet
  - VistaShuttle
- Adobe PhotoDeluxe software CD

## SETTING UP YOUR NEW DIGITAL CAMERA SYSTEM

### Installing the Batteries

#### Important Battery Usage Guides: Read Before Using the AstraCam.

**WARNING:** Improperly inserting the rechargeable batteries (wrong polarity) may cause damage to your camera and will void the warranty. See the guide symbols inside the battery case for proper installation of the batteries.

**WARNING: Non-rechargeable** AAA batteries can be used temporarily to take photos. However, these batteries must be removed prior to putting the camera in the cradle. Failure to remove all **non-rechargeable** batteries before placing the camera in the cradle may cause damage to the camera, voiding the warranty and/or causing the batteries to discharge or explode, which may result in bodily injury.

To put the rechargeable batteries in the AstraCam:

1. Unwrap the 2 AAA rechargeable batteries. Note the polarity symbols near the ends of each battery.
2. Open the battery cover at the bottom of the camera by pushing the cover out with your thumb.
3. Note the +/- polarity symbols on the contacts attached to the inside of the cover. Insert each battery so that the polarity symbol of the exposed end of each battery matches the polarity symbols on the contacts inside the battery compartment.
4. Close the cover.

**Note:** Before charging the batteries, you must install the AstraCam cradle. See page 5, "Connecting the AstraCam Cradle." When the cradle is connected, place the AstraCam in the cradle to charge the batteries. The charge time for the batteries is up to 2.6 hours.



AstraCam  
Bottom View

### Replacing Worn-Out Batteries

Replace the batteries only with AAA size, 1.2V, nickel metal hydride rechargeable batteries.

## PC SYSTEM REQUIREMENTS

- Pentium® processor or higher
- Microsoft Windows® 98
- At least 32 MB RAM
- 90 MB available hard disk space
- CD-ROM drive
- VGA Color Monitor
- USB Port
- Sound Card (recommended)

## INSTALLING THE SOFTWARE

Please quit all Windows programs before installing your new software.

**IMPORTANT:** Install the software prior to installing the AstraCam Cradle. Please install Adobe® PhotoDeluxe® first and then install the AstraCam software.

### Installing Adobe PhotoDeluxe

1. Insert the Adobe PhotoDeluxe CD into your CD-ROM drive. (If the installation program starts automatically, skip to step 5.)
2. Double-click on the MY COMPUTER icon on your Windows desktop.
3. Double-click on the PHOTODELUXE icon (your CD-ROM drive icon).
4. Double-click on the AUTOPLAY icon.
5. Follow the onscreen instructions to continue the installation. This CD will install Adobe PhotoDeluxe, Adobe® Acrobat® Reader and Adobe® Type Manager®.
6. Once everything has been installed, click on the FINISH button to finish installation and begin the registration process.
7. After registration is complete, you will be prompted to restart the computer. Click on the OK button to restart Windows.

### Installing the AstraCam Software

1. Insert the AstraCam Digital Camera CD into your CD-ROM drive. (If the installation program starts automatically, skip to step 5.)
2. Double-click on the MY COMPUTER icon on your Windows desktop.
3. Double-click on the UMAX AstraCam CD icon (your CD-ROM drive icon).

4. Double-click on the SETUP icon.
5. Follow the onscreen instructions to continue the installation. On the Select Component screen, select the programs you want to install:
  - PhotoCabinet
  - VistaShuttle
  - AstraCam Software (including the Twain driver)

The default setting is to install all three programs (highly recommended).

You must install the AstraCam and PhotoCabinet software in order to download photos to your computer using the DOWNLOAD button.

## CONNECTING THE ASTRACAM CRADLE

### Powering Up the Cradle

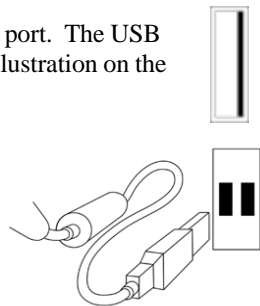
The power adapter sends power to the cradle and recharges the AstraCam batteries when the camera is resting in the cradle.

1. Insert the power adapter plug into the base at the rear of the AstraCam Cradle.
2. Attach the AC power cord to the power adapter.
3. Plug the power cord into an electrical outlet.

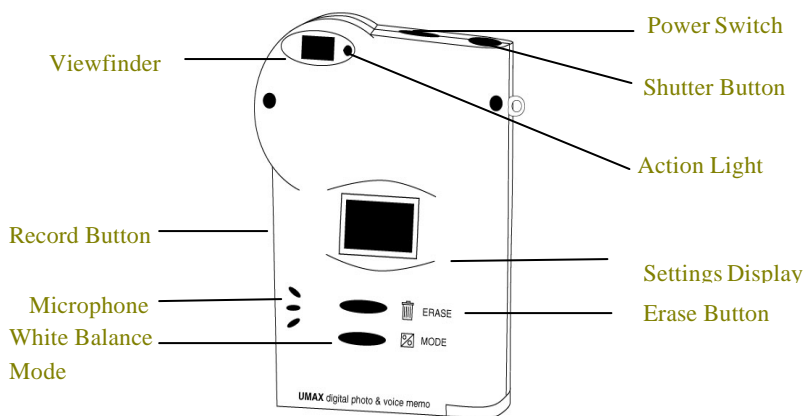
### Connecting the Cradle to Your Computer

The AstraCam Cradle connects your camera to a computer using the attached USB cable. The USB system is "hot-swappable." You do not have to turn your system off before inserting the USB cable into the port.

1. Look on the back of your computer for the USB port. The USB port is a small slot 1/2" long by 1/4" wide (see illustration on the right).
2. Gently push the USB cable connector from the cradle into the socket making sure that it is firmly inserted in the port. With the AstraCam power switch turned OFF, place the AstraCam in the cradle. Windows will display screens saying that it discovered your new hardware, is updating the driver database and is installing new software.



## THE ASTRACAM DIGITAL CAMERA



- **Viewfinder** Look through this to compose the photo.
- **Action Light** Flashes whenever camera or recorder operates and is accompanied by an audible beep.
- **Record Button** Press and hold this button to make a recording.
- **White Balance Mode** Press to change the White balance settings.
- **Erase Button** Press to erase photos from the camera.
- **Microphone** Speak toward the microphone when making a recording.
- **Settings Display** Shows the current settings of the AstraCam with the following symbols:



**White Balance Icon** Displays the selected White Balance Mode. (See page 7, "White Balance Settings for Better Photos.")



**Battery Status** Shows two solid blocks for full batteries and one solid block when batteries have less than a 20 percent charge.



**Camera Icon** Indicates that the AstraCam is ready to take photos.



**Microphone Icon** Indicates that the AstraCam recorder is ready.



**Shots/Seconds Remaining** In Camera mode, shows shots remaining. In Microphone mode, shows seconds remaining.



**Process** When this symbol flashes, the camera is processing commands.



## Taking Your First Photo

Taking photos with your AstraCam is easy:

1. Turn the power switch ON.
2. Compose your photo by looking through the viewfinder.
3. Slightly press and hold the SHUTTER button. You will hear a short beep as the AstraCam automatically sets exposure.
4. Continue pressing fully down on the SHUTTER button. You will hear a second short beep as the photo is taken. Release the shutter button.

**Note:** It is important to hold the camera very still when taking a picture. Moving the camera when shooting will create blurry pictures.

## White Balance Settings for Better Photos

AstraCam has four white balance settings that adjust the camera for specific lighting situations. These settings help you get normal looking photos in different kinds of light. One of the icons below will always appear in the settings display when the camera is turned on.

You can set the camera to take pictures in:



Sunny light



Cloudy light or shade



Tungsten light (Keep photos from looking too yellow when taken in tungsten light. This kind of light is common in homes.)



Fluorescent light (Keep your photos from looking too green when taken in fluorescent light. This kind of light is common in stores.)

To change the white balance setting before taking a photo:

1. Press the MODE button. The camera will make an audible tone. You will see the White Balance icon in the settings display change.
2. Press and release the button until the white balance setting you want appears in the settings display.

**Note:** You can also change the camera's white balance on the computer using the AstraCam program. See page 16, "Operating the AstraCam from the Program."

## Recording a Message for Your Photo

After taking your first photo, you can record sound to go with it (if the Record feature is enabled).

To record a message:

1. Press and hold the RECORD button. The action light next to the viewfinder starts blinking. In the settings display, the Microphone icon flashes and the shot counter turns into a countdown timer beginning at 20 seconds.
2. Talk into the microphone or record any close sounds.
3. When you are finished recording, or the countdown time is finished, release the RECORD button. Your AstraCam returns to photo mode and is ready for the next photo.

## Disabling the Record Feature

You can disable the Record feature on the AstraCam to allow the camera to store more photos. With Record disabled, the capacity of the AstraCam increases to 46 shots. (The default mode is Record ON with a 31-photo capacity, and the Microphone icon appears in the settings display.)

To disable the Record feature:

1. The memory must be empty (no photos are being stored in the AstraCam; see below, "Erasing Photos").
2. Press the RECORD button. The Record feature is now disabled and the AstraCam is set to take 46 photos.

**Note:** To turn on the Record feature, press the RECORD button when the memory is clear (no pictures in the camera). The Microphone icon will reappear and the camera will have a 31-photo capacity.

## Erasing Photos

You can erase the most recent photo taken or all the photos with the Erase button. When you erase a photo, the sound recording you made for it is also erased.

To erase the most recent photo:

1. Press the ERASE button. The film counter will begin blinking and the green action light will turn on.
2. Press the ERASE button again to erase the photo from the camera's memory.

To erase all the photos:

1. Press and hold down the ERASE button for 3 seconds. The film counter will begin blinking and the action light will turn on.

2. Press the ERASE button again to erase all the photos from the camera's memory. The film counter returns to "31" or "46" depending whether the Record feature is enabled/disabled.

**Note:** You can also delete photos from your camera using the AstraCam program. See page 15, "Deleting Photos."

## Camera Memory Full

When you run out of shots, a continuous beep sounds and the green light comes on to signal that camera memory is full. The film counter reads "0." It's time to download your photos to a computer.

## Recharging the AstraCam Batteries

The battery status indicator will show two solid blocks within the battery symbol to indicate that the battery is fully charged. When the batteries contain less than 20 percent of their charge, only one solid block will appear in the battery indicator. When the batteries become completely exhausted, your AstraCam will emit a continuous tone and the display will go blank. The AstraCam Cradle acts as the battery charger for your camera.

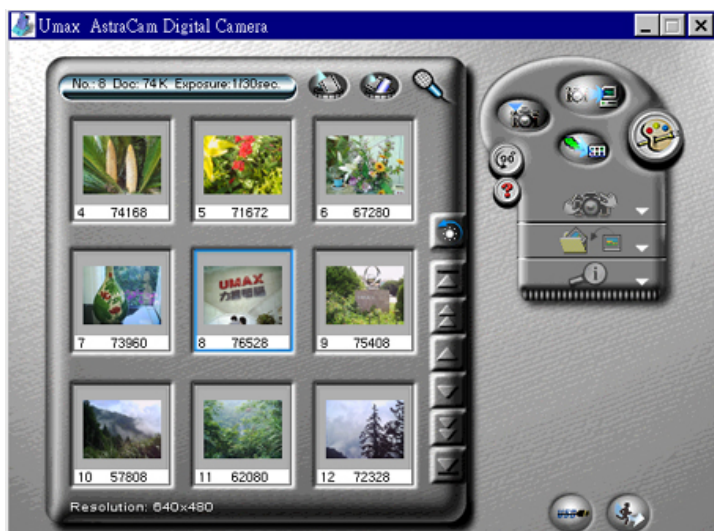
To recharge the camera batteries:

1. Turn the AstraCam power switch OFF (the batteries will not charge when the AstraCam is turned on).
2. Place the camera in the cradle with the front of the camera facing the front of the cradle. Lights on the front of the cradle indicate the battery status:
  - **Orange** The camera batteries are charging.
  - **Green** The batteries are fully charged.
  - **Red** The charger is unable to charge the batteries for some reason. Make sure the batteries are inserted properly. Turn the AstraCam OFF before placing it in the cradle. The light might also indicate that the batteries are damaged.

If the light on the cradle is not illuminated, please check that the power adapter is plugged into the cradle and into an electrical outlet.

**Note:** The charging process can take up to 2.6 hours for totally exhausted batteries.

## USING THE ASTRACAM PROGRAM



To use the AstraCam program, you must first open a TWAIN compliant photo manipulation program. TWAIN is an interface that allows cross platform transfer of data from a digital camera or scanner to a program. The AstraCam software includes a TWAIN driver to communicate with photo manipulation programs and other TWAIN compliant applications.

Examples of TWAIN compliant application software:

- PhotoCabinet
- Adobe PhotoDeluxe

Use the AstraCam program to:

- Download photos for viewing on a computer.
- Make photo adjustments.
- Transfer photos to photo manipulation programs.
- Make camera adjustments.
- Operate your AstraCam from the computer.

## Downloading Photos

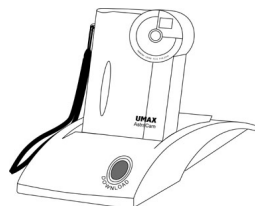
You can download photos from the AstraCam to your computer in two ways:

- Press the DOWNLOAD button on the cradle to load your photos directly into PhotoCabinet.
- Open a photo manipulation program and connect to the AstraCam.

### Prepare to Download

To prepare for downloading photos from your AstraCam:

1. Make sure the cradle is plugged into an electrical source and that the USB cable is connected to the computer.
2. Slide your camera into the cradle with its front facing the front of the cradle.



If the AstraCam is turned OFF, it will use the external power from adapter. If the AstraCam is turned ON, it will use battery power, even if the adapter is connected. If the AstraCam is turned ON, you do not need to have the adapter plugged in, but the batteries will run down.

**Warning:** If the AstraCam is turned ON, the battery charger is disabled.

### Download Photos into PhotoCabinet

To download photos into PhotoCabinet, press the DOWNLOAD button on the front of the cradle.

### How to Acquire Photos Through PhotoCabinet and the AstraCam Driver

Acquiring photos may vary with each program used, but the basic procedure is the same. You are activating the TWAIN interface between the program and the AstraCam and its software.

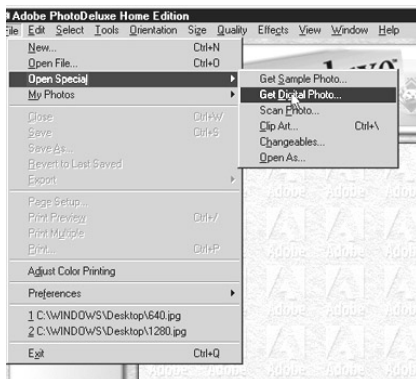
To open PhotoCabinet and the AstraCam program:

1. Open PhotoCabinet by clicking on the PhotoCabinet icon on your desktop.
2. Click on the FILE MENU.
3. Click on SELECT SOURCE. Click on UMAX ASTRACAM DIGITAL CAMERA. Click on the SELECT button (you only need to do this step 3 once).
4. Click on the FILE MENU and click AQUIRE. The AstraCam driver will launch.

## Download Photos Through a Photo Application Software

To open PhotoDeluxe and the AstraCam software:

1. Open PhotoDeluxe.
2. Click on the GET & FIX PHOTO button.
3. Click on the GET PHOTO button.
4. Click on the CAMERAS button. See that UMAX AstraCam is the selected camera.
5. Click on the OPEN CAMERA button. The AstraCam program will open.
6. Click on the LOADING THUMBNAİL(S) FROM CAMERA button at the top of the AstraCam control panel.



To open VistaShuttle and the AstraCam program:

1. Open the VistaShuttle program.
2. Click on one of VistaShuttle's task buttons to open the AstraCam software.
3. Click on the LOADING THUMBNAİL(S) FROM CAMERA button at the top of the AstraCam control panel.

## THE ASTRACAM SOFTWARE

After opening the AstraCam program with a supporting photo manipulation program, you can begin to work with your photos.

**Note:** See page 11, "Downloading Photos" for opening the AstraCam program.

The AstraCam program has two main parts:

- The Control Panel
  - Download save or transfer photos.
  - Make adjustments to both your photos and your camera.
  - Operate the camera remotely.
- The Photo Display
  - View and select downloaded photos.
  - Listen to recordings or make new ones.
  - Delete photos.

## Viewing Your Photos

To bring your photos into the Photo Display panels, click on the **LOADING THUMBNAIL(S) FROM CAMERA** button in the Control Panel. (Make sure your AstraCam camera is in the cradle.)

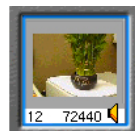


- Use the scroll photos arrows at the right of the Photo Display to see all your photos.
- Click on a photo to select it for adjustment.
- Click on the yellow speaker icon below a photo to hear a recording.

## Adjusting Thumbnail Photo

You can make adjustments to your thumbnail photos in the AstraCam program.

- **Brightness** Make the photo lighter or darker.
- **Contrast** Reduce or increase the difference between light and dark elements in the photo.
- **Highlight** Adjust the brightness of highlights.
- **Shadow** Adjust the brightness of shadows.
- **Gamma** Adjust the middle tones.



To adjust a thumbnail:

1. Click on the photo you want to adjust.
2. Click on the photo adjust palette to open the controls.
3. Click and hold an adjustment button and drag it back and forth to make a change.
4. Release the mouse button to see the change in the photo.
5. Click on the green OK button at the bottom of the photo adjust panel to save the changes. Click on the red CANCEL button to keep the photo unchanged.



## AFTER SHOT RECOVERY (ASR)

Sometimes you might take a picture that has an incorrect color cast. The AstraCam driver features a new technology developed by UMAX called After Shot Recovery (patent pending). ASR allows you, with a click of a button, to adjust the white balance of the image and correct the color cast.

1. Click on the photo you want to recover.
2. Click on the **AFTER SHOT RECOVERY** button on the Photo Display until the color of your photo appears normal.



## Rotate Photos

1. Click on the photo(s) you want to rotate. (Press and hold the CTRL key to select multiple photos.)
2. Click on the ROTATING PICTURE(S) LEFT 90° button to turn the photo(s) 90 degrees clockwise.



## Transferring the Photos

Transferring is how you move the photo(s) into photo application software from the AstraCam program.

**Note:** This section only discusses how to transfer photos to programs. Please refer to the documentation with your application software on how to Acquire.

To transfer photos to the open photo manipulation program:

### Single Photo

Double-click on the photo you want to transfer and it will appear in the photo manipulation program.

### Selected Photos

1. Click on the photo(s) you want to transfer. (Press and hold the CTRL key to select multiple photos.)

**Note:** Some applications can only take one photo at a time.

2. Click on the TRANSFERING PICTURE(S) button in the Control Panel. Your transferred photo(s) appears in the photo manipulation program.



## Saving a Photo to a File

You might want to just save your photo to a file so you can delete it from your camera and make room for more photos.

To save a photo:

1. Click on the photo you want to save, and then click on the SAVING A NEW FILE button in the Control Panel.
2. When the Save As box appears, make an entry in the file name box and choose FOLDER to save the photo to the Save To box.
3. Click on the SAVE button. Your photo is saved in JPEG format and the voice recording as a WAV file. You can open the file later in your photo manipulation program and the voice file in your audio program.





## Megapixel

Megapixel is a software feature that increases the resolution of your original photo from 640 x 480 to 1280 x 960 through the AstraCam software.

To use Megapixel:

1. Click on a thumbnail in the Photo Display.
2. Click on the CAMERA CONTROL icon on the Control Panel.
3. Click on the MEGAPIXEL button.
4. Click the CAMERA CONTROL icon to close the panel.



Look at the bottom of the photo display. The resolution of the selected photo has increased to 1280 x 960.

## Deleting Photos

You can delete one or all the photos stored on your AstraCam.

- **To delete one photo**, click on the photo you want to delete and then click on the DELETING PICTURE(S) button at the top of the Photo Display.
- **To delete selected photos**, click on the photos you want to delete (press and hold the CTRL key to select multiple photos), and then click on the DELETING PICTURE(S) button at the top of the Photo Display.
- **To delete all the photos**, click on the DELETING ALL PICTURES button.



When the dialog box appears asking if you want to delete the photo(s), click on the YES button.

**Note:** You can also delete photos using the ERASE button on the camera. See page 8, "Erasing Photos."

## OPERATING THE ASTRACAM FROM THE PROGRAM

The AstraCam program has everything you need to operate the camera from the computer when the camera is in its cradle.

You can:

- Take photos.
- Make recordings.
- Adjust your AstraCam settings.

### Taking a Photo

To take a photo using the AstraCam program, click on the TAKING PICTURE button.



### Making a Recording

You can make a recording for the last photo taken or overwrite a previous recording for any photo in the display:

1. Click on the photo you want to make the recording for.
2. Click on the RECORDING SOUND button. If you are overwriting a previous recording, a dialog box prompts if you want to record over the message. Click on the YES button.
3. Speak toward the camera from a close distance.



**Note:** When recording with the AstraCam software, you must make a full 20-second recording. Clicking on the microphone will not halt the recording process.

### Adjusting AstraCam Settings

Make sure the camera is switched ON and in the cradle.

To adjust the settings:

1. Click on the CAMERA CONTROL button on the Control Panel to open the Camera Settings.
2. Click on the setting you want.
3. Click on the CAMERA CONTROL button to close the Camera Settings.



## White Balance

Select a white balance setting according to your lighting conditions. These settings are the same as the ones on your AstraCam. See page 7, "White Balance Settings for Better Photos."

## Resolution

The resolution setting for the AstraCam is always 640 x 480. However, the Megapixel feature can increase the resolution of downloaded photos to 1280 x 960 using the AstraCam software.

## Camera Information

Click on CAMERA INFO to check camera information and picture capacity.

## Checking the USB Port

Click on the CHECK USB PORT button if you are having problems with your system. It may report a problem. If you find that the cradle is not connected to the USB port, re-connect it, turn on the AstraCam and click on the RETRY button.



## Quitting the AstraCam Program

To quit the program, click on the EXIT icon at the bottom of the AstraCam display, or click on the X at the top right of the window.



# ORGANIZING YOUR PHOTO DATA WITH PHOTOCABINET

PhotoCabinet's Information feature helps you keep track of your photos. You can enter important data about your photo, give it a title and even add a voice memo. Later you can quickly retrieve your photo using the information you entered.

To use the Information feature:

1. If you do not already have photos stored in PhotoCabinet, refer to page xx, "Downloading Photos."
2. You can use the Information Feature in Page View (one photo is displayed) or

**Page Information**

Title: Train

Photo Info Address Book

Author: Casey

Keyword: Railroad

Place: Gold Country

Creation Date: 8/16/99

Memo

Summer vacation '99 with family

Voice Memo

Add Voice Delete Voice Play/Voice

Image Info

24-Bit True Color Image, 96 dpi, 6.7x5.00 inches (640x480 pixels)

OK Help

Thumbnail View (All photos downloaded from your AstraCam are displayed). To switch between Page View and Thumbnail View, open the VIEW menu and select SWITCH TO THUMBNAIL VIEW or SWITCH TO PAGE VIEW.

3. If PhotoCabinet is in Thumbnail View, click on the photo you want to work with (a red frame will appear around the selected photo). If you are in Page View, proceed to step 4.
4. Open the View menu and select INFORMATION.
5. Enter the data.
  - In the Title field, name your photo.
  - On the Photo Info tab, fill in the Author, Keyword and Place fields.
  - Click on the ADDRESS BOOK tab and fill in the fields with all the important information you want.
  - Fill in the MEMO field.
6. To add a voice memo, click on the ADD VOICE button (your AstraCam must be in the cradle). Click on the RECORD button and speak into your AstraCam. When you are done, click on the STOP button and the OK button.
7. Click on the OK button to close the Information box and save your data.

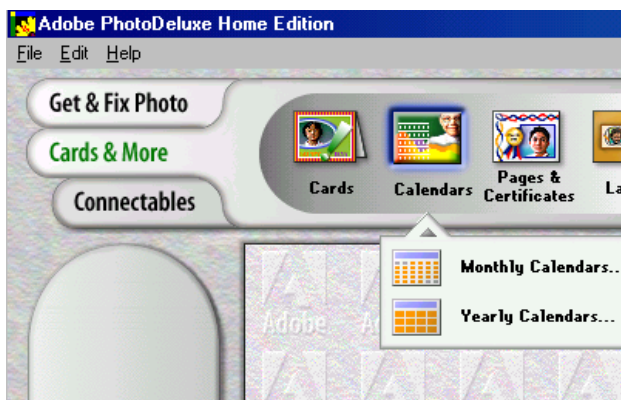
## Retrieving Your Photo

Once your photo information is recorded, you can open it later by using the Find function:

1. Open the EDIT menu and select FIND.
2. Fill in one of the fields with the information from your photo. For example, if the title of your photo is "Bob," type it into the Title field.
3. Click on the SEARCH NOW button. A thumbnail of the photo will appear at the bottom of the Find box. Click on the GO TO button to open your photo.

If you have trouble remembering an exact search term, try the Fuzzy Level search. For more information on Fuzzy Level searching, click on the FUZZY LEVEL tab and click on the HELP button.

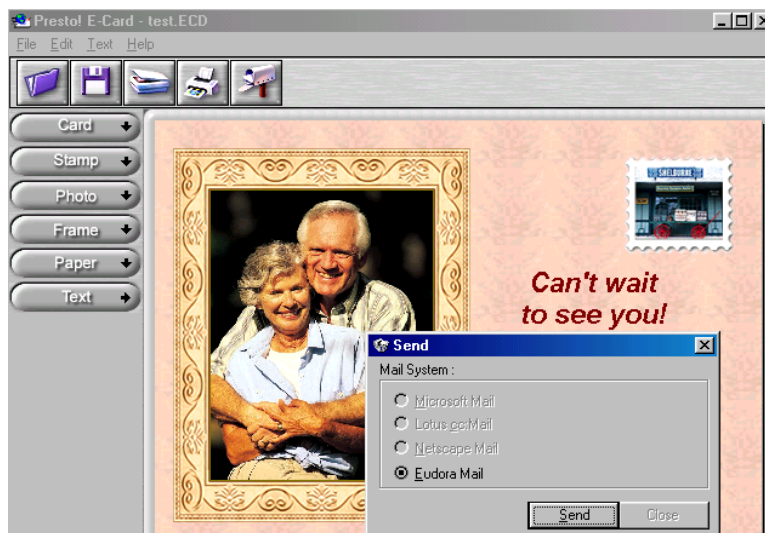
## CREATING A CALENDAR WITH PHOTODELUXE



You can create your own photo calendar using PhotoDeluxe and your AstraCam.

1. Insert the PhotoDeluxe CD in your CD-ROM drive so that you can access the calendar templates.
2. Open PhotoDeluxe by selecting **START > PROGRAMS > ADOBE > PHOTODELUXE HOME EDITION > ADOBE PHOTODELUXE HOME EDITION**. The PhotoDeluxe window appears.
3. Click on the **CARDS & MORE** button
4. Click on the **CALENDARS** icon, and **CHOOSE MONTHLY CALENDARS** option from the drop-down menu.
5. Follow the onscreen instructions through step 5, then click on the **ADD** tab and choose **CAMERAS**. The AstraCam software will open.
6. Click on the **DOWNLOAD THUMBNAIL(S) FROM CAMERA** button to load photos from your AstraCam.
7. Double-click on the photo you want for your calendar to bring it into PhotoDeluxe. The **Open Photos** menu displays the thumbnail you downloaded from your camera.
8. Drag the thumbnail over the new calendars you created.
9. Click on the **SAVE** button from the **File** menu to store the calendar page, or click on the **PRINT** button to print the calendar page.

## CREATING A PHOTO & SOUND E-MAIL



PhotoCabinet and E-Card use the following E-mail programs:

- Eudora
- Microsoft Mail
- Netscape Mail
- Lotus CC: Mail

**Note:** If you do not have one of the e-mail programs listed above, see page 21, "Sending a Photo & Sound File as an Attachment."

### Preparing a Photo & Sound E-Mail Greeting

1. Take a photo and make a recording with your AstraCam.
2. Place the AstraCam in the cradle and press the DOWNLOAD button. PhotoCabinet will open and display your photo. If other photos are being displayed from previous downloads, look at the In Box at the left of the PhotoCabinet display and click on the bottom film roll icon to see the latest download.
3. Click on the program selector arrows at the bottom of the screen until you see E-CARD.
4. Drag your photo & sound selection to the E-Card icon. The E-Card program will open and display your photo.

5. Make your card, stamp, frame, and paper selections by clicking on a button at the right of the screen to open the selection. Drag the slider at the right of the panel to view all the options. Click on the selection you want and it will appear with your photo. Click on the **ARROW** at the top of the panel to close it so you can click on the other buttons.
6. Adjust and resize your photo.
  - To reposition your photo, drag it to wherever you want.
  - To re-size the photo, drag the frame corners. If you want to undo the re-size, press the **CTRL + Z** keys to return the photo to its normal size.
7. Add text to your greeting. Click on the **TEXT** button and type in the text you want. Click on the **FINISH ARROW** at the right of the text box to insert text into your greeting. Click on the **X** at the upper right of the text box to close it. To position your new text, drag it to the new position.
8. Review your recording by clicking on the **CASSETTE** icon at the lower right corner of your greeting.

## Sending Your Photo & Sound E-Mail Greeting

1. Click on the **MAILBOX** icon at the top of the screen.
2. A Send box will appear displaying the compatible e-mail programs (programs not installed on your system are grayed out). Select the e-mail program you want and click on the **SEND** button to open your e-mail program.
3. Fill in the recipient field and press the **SEND** button.

## Sending a Photo & Sound File as an Attachment

If you do not have one of PhotoCabinet's compatible e-mail programs, you can save your greeting as a self-expanding file and send it as an attachment.

1. To make your greeting, follow steps 1 through 8 beginning on page 20.
2. When your greeting is finished, select **SAVE** from the File menu.
3. Choose the **.EXE** file type, name your file and click on the **SAVE** button. Your picture & sound e-mail will turn into a self-expanding file.
4. Open your e-mail program, create a new message and attach your file to it. The person who receives the attachment can simply click on the file to open it.

**Note:** Refer to your Internet service provider (ISP) or your email program for information on attachments.

## CARING FOR YOUR ASTRACAM

- Do not store your AstraCam in hot locations such as in a closed car under direct sunlight.
- Do not use solvents to clean your AstraCam Camera or AstraCam Cradle.
- Do not apply any liquids directly to the camera or cradle.
- Clean the camera and cradle with a soft, lint free cloth.

To clean the lens:

1. Carefully use an air blower or compressed gas duster to blow dust off the lens.
2. Moisten lens cleaning tissue with a commercial lens cleaning fluid and wipe the lens **gently**. Never pour lens cleaning fluid directly on the lens.



## ASTRACAM SPECIFICATIONS

<b>Optical Resolution</b>	640 x 480
<b>Maximum Resolution (interpolated)</b>	1280 x 960
<b>Interface</b>	USB AstraCam Cradle with Built-In Battery Charger
<b>Power Source</b>	Rechargeable - 2AAA Nickel Metal Hydride Batteries (included)
<b>Memory</b>	4MB Internal Flash Memory
<b>Photo Capacity</b>	46 Photos (31 with Sound enabled)
<b>Voice Recorder</b>	Built-In
<b>Voice Capacity</b>	Up to 20 Seconds per Image
<b>Download Speed</b>	3 Seconds per Image (approximate)
<b>Lens Aperture</b>	Focus Free (F2.8)
<b>Lens Focal Length</b>	50mm (as equivalent to a 35mm camera)
<b>Lens Focal Distance (focus free)</b>	20" to Infinity
<b>ISO Sensitivity</b>	125 (equivalent)
<b>Exposure</b>	TTL (through the lens) Automatic Exposure
<b>Processing Time between Photos</b>	2.5 Seconds
<b>Image Output File Type</b>	JPEG
<b>Sound Output File Type</b>	WAV
<b>Weight</b>	3.9 oz. (without batteries)
<b>Item #</b>	MTMD-84500
<b>UPC Code</b>	785461845000

## CONTACTING TECHNICAL SUPPORT

The UMAX AstraCam is designed to be reliable, easy-to-install, and easy-to-use. If you encounter any problems with your camera:

- Check out the UMAX Web site at: <http://www.umax.com/support>
- E-mail UMAX with your technical support question at: [support@umax.com](mailto:support@umax.com)
- Call UMAX automated interactive support 24-hours a day at: 1-800-468-8629
- Contact your dealer or call the UMAX support line between 6 a.m. – 8 p.m. (PT) Monday-Friday and 8 a.m. – 5 p.m. (PT) Saturday at 208-552-7980.

**Note:** You are eligible to receive 90 days of free technical support from the purchase date. If you call after the 90-day period, you will be charged a flat fee of \$19.95 per call. All charges will be billed to your (major) credit card.

Before calling, please be sure to have the following information ready:

- The camera model and serial number.
- The version number of the camera driver (located on the front of the CD).
- The computer model you are using.
- The printer and model that you are using (if applicable).
- The application software packages that you are using.
- Error codes or messages seen.
- A description of what you were doing at the time of the malfunction so that the problem can be recreated.
- Other observations that may aid the technician in identifying the problem and solution.
- When you call, please be in front of your computer. You will need to have your camera and the computer turned on. Try to have as much information about your problem as possible. This information allows the technician to more effectively troubleshoot your problem.

## PRODUCT REGISTRATION

To register your UMAX AstraCam digital camera, please go to the UMAX Web site at: <http://www.umax.com/support/registration> and follow the online instructions.

## FCC DECLARATION OF CONFORMITY

Declares that the product:

Product Name: Digital Camera

Model No.: DC-D1 (or) H9C0

FCC Rules: Tested to comply with FCC Part 15, Class B

Operating Environment: For home or office use:

### FCC Compliance Statement:

This device complies with part 15 of the FCC Rules. Operation is subject to the following two conditions: (1) This device may not cause harmful interference, and (2) This device must accept any interference received, including interference that may cause undesirable operation.

### Information to user:

This equipment has been tested and found to comply with the limits of a Class B digital device, pursuant to Part 15 of the FCC Rules. These limits are designed to provide reasonable protections against harmful interference in a residential installation. This equipment generates, uses and can radiate radio frequency energy and, if not installed and used in accordance with the instructions, may cause harmful interference to radio communications. However, there is no guarantee that interference will not occur in a particular installation. If this equipment does cause harmful interference to radio or television reception (which can be determined by turning the equipment off and on) the user is encouraged to try to correct the interference by one or more of the following measures:

- Reorient/relocate the receiving antenna.
- Increase the separation between the equipment and the receiver.
- Connect the equipment to an outlet different from the one to which the receiver is connected.
- Consult the dealer or an experienced radio/TV technician for help.

### Caution:

Changes or modifications not expressly approved by the manufacturer responsible for compliance could void the user's authority to operate the equipment.

The party responsible for the product compliance:

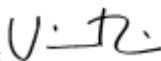
Corporate Name: UMAX Technologies, Inc.

Address: 3561 Gateway Blvd., Fremont, CA 94538, USA

Person responsible for making this Declaration:

Position/Title: President

Signature:



## WARRANTY

### One Year Limited Warranty

UMAX Technologies, Inc. UMAX warrants this hardware product against defects in material and workmanship for a period of ONE (1) year from the original date of purchase.

Should defect(s) be discovered, the product may be returned either to the manufacturer or an authorized UMAX service center. If you are returning product for repair, please be sure to do the following:

- 1) Call UMAX Technical Support Mon-Fri during regular business hours at (208) 552-7980 and obtain an RMA (Return Merchandise Authorization) number.
- 2) Clearly write your RMA number on the OUTSIDE of the box or package next to the shipping label.
- 3) Include a copy of the bill of sale with the returned product.
- 4) Unless otherwise instructed, do not return any manuals or software when returning items for repair.
- 5) Ship to UMAX via a traceable shipping method and retain the tracking number.

This warranty is only valid within the boundaries and territories of the USA and Canada. UMAX is not responsible for costs incurred due to shipping, insurance, customs, or duties. UMAX is not responsible for non-traceable packages or packages shipped without a valid RMA number on the outside of the package.

This warranty does not apply if the product has been damaged by accident, electrical fault, through misuse or abuse. If the product has been altered without written authorization by UMAX, the warranty will not be applicable.

This Warranty applies only to hardware products manufactured by or for UMAX. Warranted products must bear the "UMAX" brand name, tradename, or logo. The aforementioned warranty and remedies are exclusive, and in lieu of all others, whether oral, written, expressed or implied. UMAX specifically disclaims any and all implied warranties of merchantability and fitness for a particular purpose.

UMAX is not responsible for incidental or consequential damages resulting from any breach of warranty. UMAX is not responsible under any other legal theory, including, but not limited to lost profits, and any cost of recovering reprogramming or reproducing any program or data stored in or used with UMAX products.

For more warranty information, please call UMAX at (208) 552-7980.

### Warranty Service

If your UMAX product needs to be returned for repair, you must contact UMAX technical support or your reseller in Canada prior to shipment for an RMA number before sending in the product. The RMA number is a Return Merchandise Authorization number. UMAX and UMAX Authorized Service centers will refuse all shipments without a proper RMA number. The RMA number MUST be printed on the outside of the box or package next to the shipping label.

UMAX Technologies  
3561 Gateway Blvd., Fremont, CA 94538, USA  
[www.umax.com](http://www.umax.com)